



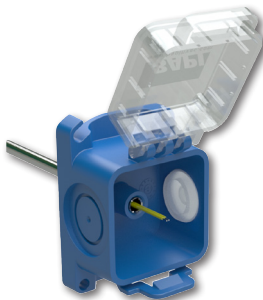
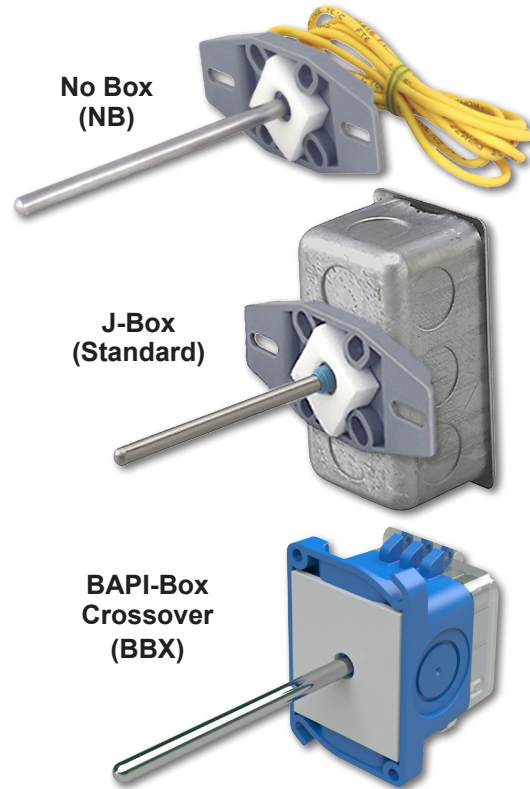
Features & Options

- Averaging Lengths: 12", 2', 3' and 4'
- Three Enclosure Styles including the new BAPI-Box Crossover with Hinged Cover

BAPI Rigid Averaging Units feature closed cell foam to seal the probe insertion hole and absorb vibration. Mounting tabs allow for easy installation directly to the wall of the duct. All units have etched Teflon leadwires and encapsulated sensors to create a watertight package that can perform under real world conditions.

Averaging probes should be used wherever there is a chance for stratified layers of hot and cold air. Averaging probes are made of 1/4" diameter stainless steel tubing.

Rigid Averaging Units come standard with a 2"x4" steel J-Box but are also available with no box or the new BAPI-Box Crossover enclosure.



The New BAPI-Box Crossover Enclosure

The new BAPI-Box Crossover features a hinged cover with thumb latch for easy termination. A pierceable knockout plug is available for the open port. See the Accessories section for more info.

(Units shown with knockplug plug sold separately.)



Specifications

Environmental Operation Range:

Temperature:

BAPI-Box Crossover: -40 to 85 °C

Other Enclosures: -40 to 100 °C

Humidity: 0 to 95%, non-condensing

Sensing Element:

Thermistor or RTD (See Sensors Section for Specs.)

Probe Material:

Stainless Steel, 1/4" diameter

Enclosure Material:

Junction Box: Galvanized Steel

BAPI-Box Crossover:

UV-resistant polycarbonate, UL94, V-0

Enclosure Rating:

Junction Box: IP20, NEMA 1

BAPI-Box Crossover (BBX):

IP10, NEMA 1

IP44 with knockout plug in open port

Encl. Dimensions: H x W x D

BAPI-Box Crossover:

3.1 x 2.2 x 1.9" (79 x 56 x 49mm)

Junction Box

4.2 x 3.9 x 1.94" (106 x 98.4 x 49mm)

(For enclosure dimension drawings, see the end of the section.)



Use the Option Selection Guide below to create your custom part number. Replace the number and parenthesis with the designator for each selection. Skip the designator and dashes for optional selections that are not required in your configuration.



Rigid Averaging Sensor Option Selection Guide

BA/ (#1) - (#2) - (#3) - (#4)

#1: Temperature Sensor (required)

- 1.8K1.8K Thermistor
- 3K3K Thermistor
- 10K-210K-2 Thermistor
- 10K-310K-3 Thermistor
- 10K-3[11K].....10K-3[11K] Thermistor
- 20K20K Thermistor
- 1K[375]1K Platinum RTD (375 curve)
- 1K[Ni].....1K Ω Nickel RTD
- 1K1K Platinum RTD (385 curve)

Transmitters below require a BAPI-Box Crossover Enclosure

- T1K[32 TO 212F]1K Plat. RTD Transmitter, 4 to 20 mA Output, 32 to 212°F Range
- T1K[20 TO 120F]1K Plat. RTD Transmitter, 4 to 20 mA Output, 20 to 120°F Range
- T1K[0 TO 100F]1K Plat. RTD Transmitter, 4 to 20 mA Output, 0 to 100°F Range
- T1K[0 TO 100C]1K Plat. RTD Transmitter, 4 to 20 mA Output, 0 to 100°C Range
- T1K[-7 TO 49C]1K Plat. RTD Transmitter, 4 to 20 mA Output, -7 to 49°C Range
- T1K[-18 TO 38C]1K Plat. RTD Transmitter, 4 to 20 mA Output, -18 to 38°C Range

Matched Transmitters are also available. Contact your BAPI representative for ordering.

#2: Probe Type and Length (required)

- RA-12"Rigid Averaging, 12" (0.3m) Length
- RA-2'Rigid Averaging, 2' (0.6m) Length
- RA-3'Rigid Averaging, 3' (0.9m) Length
- RA-4'Rigid Averaging, 4' (1.2m) Length

#3: Enclosure and Lead Length (optional, J-Box comes standard)

- BBXBAPI-Box Crossover (IP10, NEMA 1)
- NB.....No Box (comes with 6" Etched Teflon Leads)

#4: Test & Balance or Terminal Strip (optional, requires a BAPI-Box Crossover Enclosure)

- TBTest & Balance Switch
- TSTerminal Strip Connection

Additional options are available for these units but not shown in this Selection Guide. Contact your BAPI representative for the complete list of options.

Example Number: BA/ (**10K-2**) - (**RA-2'**) - (**BBX**) - ()

Actual Number (with parenthesis removed): BA/10K-2-RA-2'-BBX

Description: 10K-2 Thermistor, Rigid Averaging Sensor, BAPI-Box Crossover Enclosure.

Your Number: BA/

