



Features & Options

- Plastic with UL94V-0 Flame Rating
- Hinged Cover with Latch
- NEMA 4 and IP66 Rating for BB & BB2
- Multiple 1/2" NPSM and Drill Out Conduit Hubs
- Accepts All 1/2" Conduit Connectors

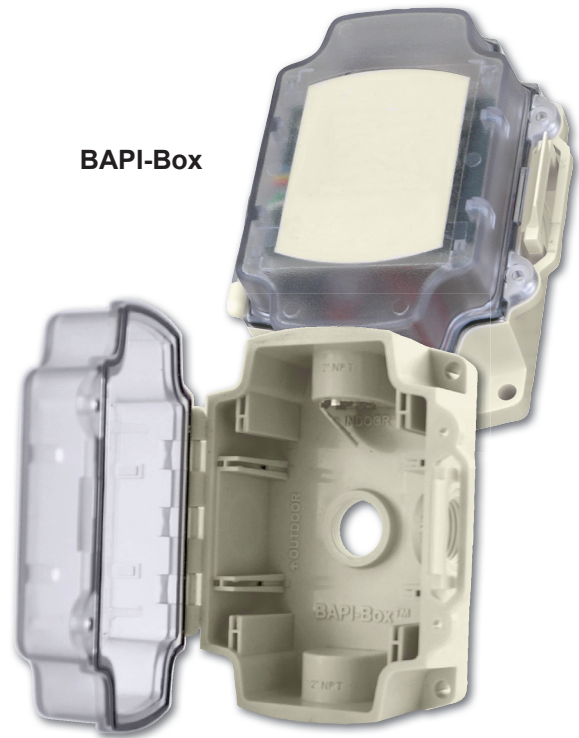
The BAPI-Box, BAPI-Box 2 and BAPI-Box 4 enclosures are made especially for HVAC probes and transmitters. The through holes come out in all directions to accommodate duct, averaging, immersion and strap-on probe sensors. The rest of the through holes provide 1/2" threaded or thin wall conduit connectors for wiring.

The plastic is flame rated for plenum applications, and corrosion proof from common chemicals present in any HVAC application. The hinged door makes wiring easy and the cover is impossible to lose or drop. The clear door cover of the BAPI-Box and BAPI-Box 2 make digital displays or custom logos practical.

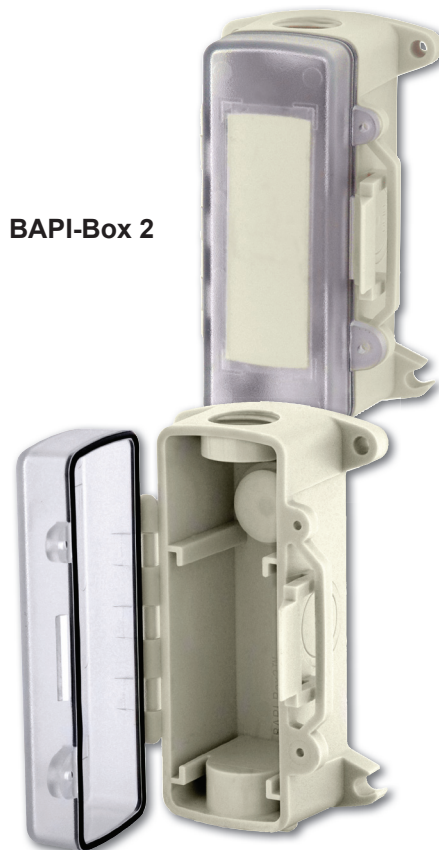
The BAPI-Box and BAPI-Box 2 are watertight with a rating of NEMA 4 or IP66 and UV resilient for outside air use. The external mounting tabs maintain enclosure integrity and make securing with screw guns easy.

The BAPI-Box 4 is small and made of plastic with an opaque, hinged cover. It carries an IP10 rating for indoor use and is perfect for duct, immersion, averaging, remote and strap-on temperature sensors. It carries an IP44 rating when BAPI's Pierceable Knockout Plug is installed in the open port. For more info on the plug, see page E29

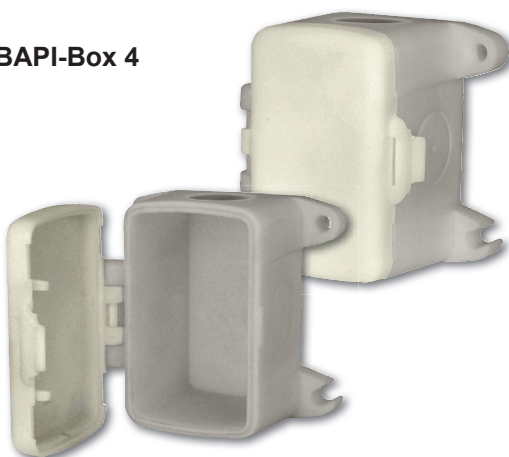
BAPI-Box



BAPI-Box 2



BAPI-Box 4





Rev. 01/06/15

BAPI-Box Style Enclosures

E17

Accessories for HVAC/R

Ordering Information

PART NUMBERS

- BA/BB** Plastic BAPI-Box, 5" x 4.2" x 2.5"
- BA/BB2** Plastic BAPI-Box 2, 4.9" x 2.8" x 2.35"
- BA/BB4** Plastic BAPI-Box 4, 2.8" x 2.8" x 2.1"
- BA/BB4-D** Plastic BAPI-Box 4, duct configuration with foam backing and 1/4" probe hole, 2.8" x 2.8" x 2.1"
- BA/CLN-CUT-50** 1/2" threaded knockout cutting tool for BAPI-Box and BAPI-Box 2 (see pg E18)

See end of Section E for list pricing.

Specifications

Case Material:

BB, BB2 Polycarbonate, UV Resistant
 BB4 Nylon for indoor use

Flame Rating:

UL94 V-0

Color:

Warm White

Cover:

BB BB2 Polycarbonate, UV Resistant
 BB4 Clear with continuous gasket
 Opaque without gasket

Door:

BB BB2 Hinged with latch tab & two securing screws
 BB4 Hinged with latch tab

Enclosure Rating:

BB, BB2 NEMA 4, IP66 (securing screws required)
 BB4 IP10 (IP44 with Pierceable Knockout Plug)

PCB Mounting Rails: BB and BB2 (No PCB rails in BB4)

Rail Dimensions 2.75" (69.8mm) wide, 1.25" (38mm) height
 BAPI-Box (BB) 4 possible rails (only 2 at once)
 BAPI-Box 2 (BB2) 2 possible rails
 (only 1 used at a time recommended)

Environmental Operating Range:

Temperature -40 to 85°C (-40 to 185°F)
 Humidity 0 to 100% RH, Condensing (no submerging)
 (BB4 Non-Condensing)

Box Entry:

BB, BB2 Threaded or EMT with connector
 BAPI-Box (BB) Four 1/2" NPSM & One 1/2" drill out ports
 BAPI-Box 2 (BB2) Three 1/2" NPSM & Three 1/2" drill out ports
 BAPI-Box 4 (BB4) Three 1/2" drill out ports, One 1/2" open port

Mounting:

Four external tabs

Weight:

BAPI-Box (BB) 0.44lb, (0.2Kg)
 BAPI-Box 2 (BB2) 0.28lb, (0.13Kg)
 BAPI-Box 4 (BB4) 0.18lb, (0.082Kg)

